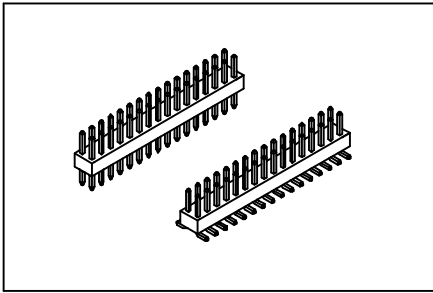


Pin Header 1.00mmX1.00mm(0.039"X0.039")

GXCON



Material:

Housing: High temperature housing withstands IR and VPR soldering methods.

Contacts: Brass.

Plating: Gold plated over nickel.
Tin plated over nickel.

Electrical Characteristics:

Current Rating: 1 AMP.

Insulator Resistance: 5000MΩmin. at DC 500V.

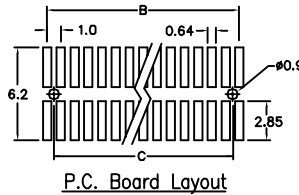
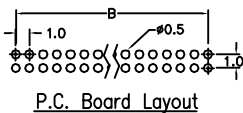
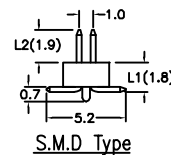
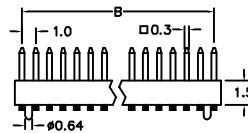
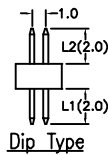
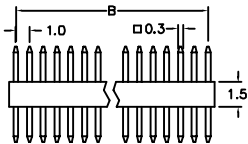
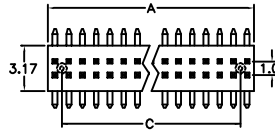
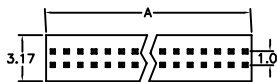
Contact Resistance: 20mΩmax. at DC 100mA.

Operating Temperature: -65°C~+125°C.

Max Processing Temperature: 230°C for 30~60 seconds.

Features:

- * Dual Row Dip & Surface Mount.
- * Low profile insulator 1.50mm(0.059").
- * Custom design provides wide product flexibility.



Position	6 Thru 100
Dimension	
A	1.0 X No. of Positions /2
B	1.0 X (No. of Positions /2-1)
C	1.0 X (No. of Positions /2-2)

Ordering information

PH31-	<u>2</u>	<u>50</u>	<u>1</u>	<u>1</u>	<u>P</u> /L1 /L2
Series	Double Row	No. of Pin Per Row	1: Gold Plated 2: Tin Plated	1: Straight 3: Surface Mount	*P: With Post *N: Without Post

Custom Design: Straight (i.e. PH31-25011/L1 /L2)
Surface mount (i.e. PH31-23013P/L1 /L2)